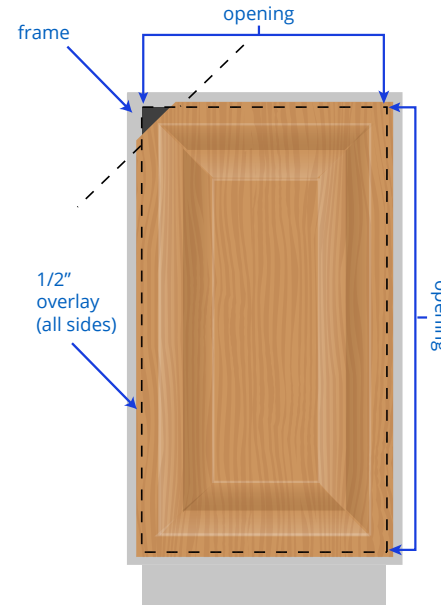


CABINET MEASUREMENTS			WHAT TO ORDER			
Opening Width	Opening Height	Desired Overlay	Single Doors Width	Single Doors Height	Double Doors Width	Double Doors Height



SINGLE DOOR



The overlay is the distance that door goes past the opening. The door's width and height will be the width or height of your opening plus twice the overlay.

width/height = opening + (overlay x 2)

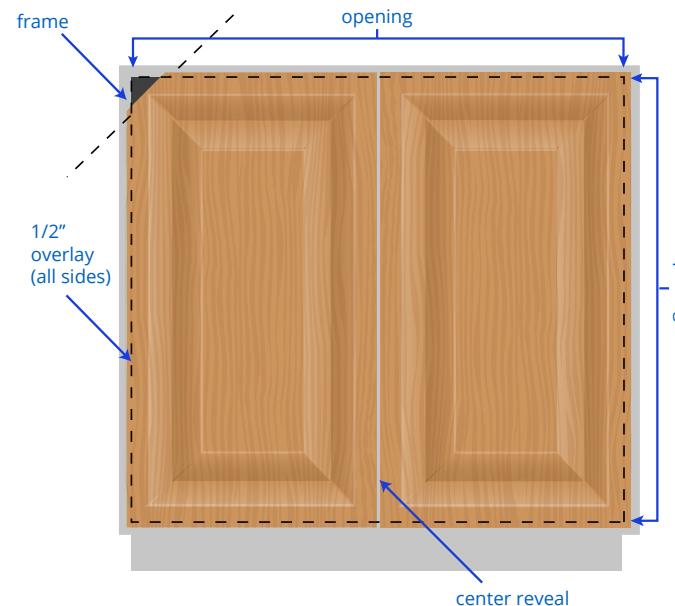
example

If your opening is 10" w x 20" h and you want a door with a 1/2" overlay (on all four sides) you need to order a door that's 11" w x 21" h.

W: $10" + (0.5" \times 2) = 11" w$

H: $20" + (0.5" \times 2) = 21" h$

Single door cabinets should be no wider than 25".



SPLIT DOORS



For split doors, 2 doors on 1 opening, the overlay is only on the edges facing the frame. The doors are separated by the center reveal which is 0.125". To calculate your door width take the opening plus twice the overlay, subtract .125" (for the reveal), and divide by 2. The height is the same as with a single door.

width = (opening + (overlay x 2) - 0.125)/2
height = opening + (overlay x 2)

example

If your opening is 40" w x 20" h, doors with a 1/2" overlay will need to be 20.4375" w x 21" h

W: $(40 + (0.5 \times 2) - .125)/2 = 20.4375" w$

H: $20 + (0.5 \times 2) = 21" h$

Remember to order 2 doors when you're ordering for a split door cabinet!